

International School of Innovations and Space Education, Russia

RUSSIAN COSMONAUT TRAINING CENTER TOUR GUIDE

TOUR #1

2-hour Grand Tour of Cosmonaut Training Center

You will see main training facilities where all Russian cosmonauts and International astronauts train for space flights. English speaking tour guide will tell you a lot about crew training and history of the Space Center.



International School of Innovations and Space Education, Russia

TOUR #1 (CONTINUE) You Will See

Soyuz vehicle trainers facility. There are multiple trainers that are used to train crew skills during all stages of flight: lift-off, autonomous flight, approach and docking/undocking, landing. You will get knowledge about crew training process and what each trainer is used for.



MIR space station mock-up was used to train Soviet Union cosmonauts and International crewmembers in the past. Today, the station is used for youth space educational purposes.



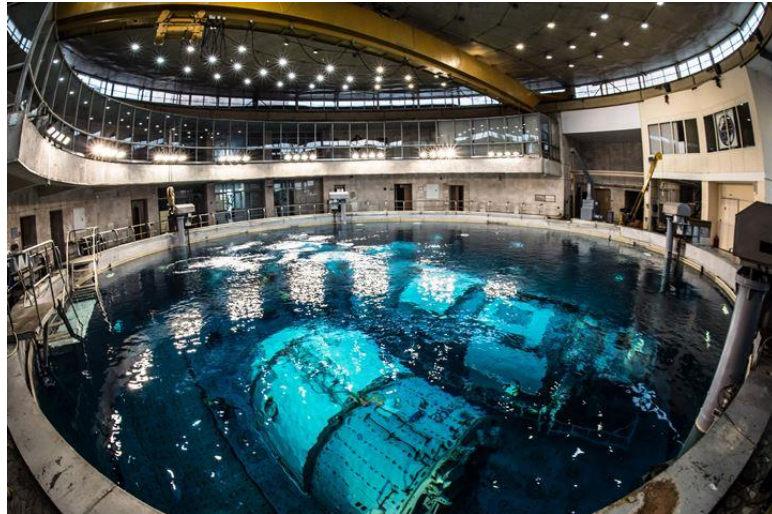
World's number one Centrifuge that can make 30g load. All crewmembers to fly Soyuz vehicle have to train their vestibular apparatus. That enables them to resist g-loads that happen during insertion and descent. The crew has to be able control the spaceship under g-loads. Maximum g-load that a crew can have is 8-g during capsule landing.



International School of Innovations and Space Education, Russia

TOUR #1 (CONTINUE) You Will See

HydroLab (like NBL, Neutral Buoyance Lab at Johnson Space Center, Houston). The Lab simulates zero-gravity and allows to train skills to perform EVAs - space walk tasks.



TOUR #1 Info

Tour lasts 2 hours

Minimum number of participants – 10, English speaking tour guide

Camera/pictures allowed free

COST: \$ 85 per ticket

Participants' data and payment must be submitted/made no later 35 days before tour

International School of Innovations and Space Education, Russia

TOUR #2 Grand Tour and Docking Simulation

Dock Soyuz Vehicle to the International Space Station

The tour combines a Grand Tour and Soyuz vehicle docking simulation. After the Grand Tour ends, the group will be introduced a pre-requisite 45-min lecture on principles of docking a space object (spaceship) to another space object (International Space Station). After receiving required instructions and knowledge on how to operate hand-controls, you will be able to try to dock Soyuz vehicle to the Space Station. The simulator is identical to what all crewmembers, cosmonauts and astronauts do.



TOUR #2 Info

Tour lasts 4 hours (9am-1pm, 2pm-6pm)

Minimum number of participants – 10, English speaking tour guide

COST: \$ 140 per ticket

Participants' data and payment must be submitted/made no later 35 days before tour

All activities video here <http://visitgctc.com/gallery>